

# GP 672

## 6V 7.2Ah

GP 672 is a general purpose battery with 3-5 years in standby service or more than 260 cycles at 100% discharge in cycle service. As with all CSB batteries, all are rechargeable, highly efficient, leak proof and maintenance free.



### Specification

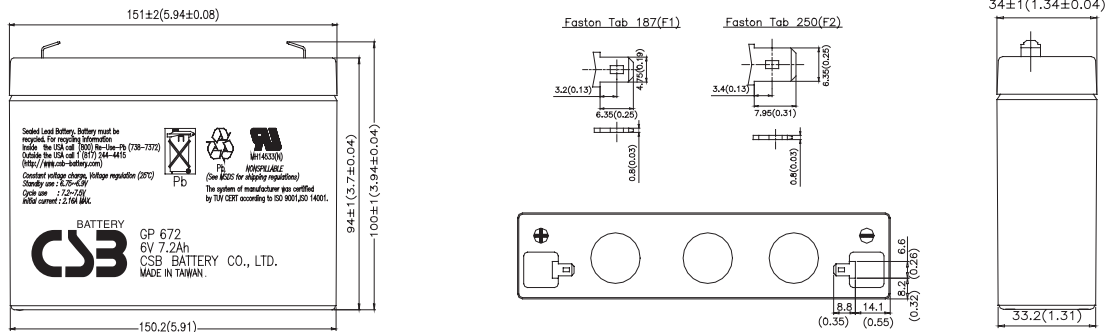
|   |  |
|---|--|
| <b>Cells Per Unit</b>                             | 3  |
| <b>Voltage Per Unit</b>                           | 6  |
| <b>Capacity</b>                                   | 7.2Ah @ 20hr-rate to 1.75V per cell @25 °C(77°F)   |
| <b>Weight</b>                                     | Approx. 1.31kg(2.90 lbs)   |
| <b>Maximum Discharge Current</b>                  | 100A/130A(5sec)  |
| <b>Internal Resistance</b>                        | Approx. 20mΩ   |
| <b>Operating Temperature Range</b>                | Discharge: -20°C~50°C(-4°F~122°F)<br>Charge: 0°C~40°C(32°F~104°F)<br>Storage: -20°C~40°C(-4°F~104°F)   |
| <b>Nominal Operating Temperature Range</b>        | 25°C±3°C(77°F±5°F)   |
| <b>Float Charging Voltage</b>                     | 6.75 to 6.9 VDC/unit Average at 25°C(77°F)   |
| <b>Recommended Maximum Charging Current Limit</b> | 2.16A  |
| <b>Equalization and Cycle Service</b>             | 7.2 to 7.5 VDC/unit Average at 25°C(77°F)  |
| <b>Self Discharge</b>                             | CSB Batteries can be stored for more than 6 months at 25°C(77°F). Please charge batteries before using. For higher temperatures the time interval will be shorter. |
| <b>Terminal</b>                                   | Faston Tab 187/250   |
| <b>Container Material</b>                         | -ABS (UL94-HB)*Flammability resistance of UL94-V2 can be available upon request.   |



CSB-manufactured batteries are UL-recognized components under UL924 and UL1989. CSB is also certified by ISO 9001 and ISO 14001.

### Dimensions

unit: (MM)



### Constant Current Discharge Characteristics Unit:A (25°C,77°F)

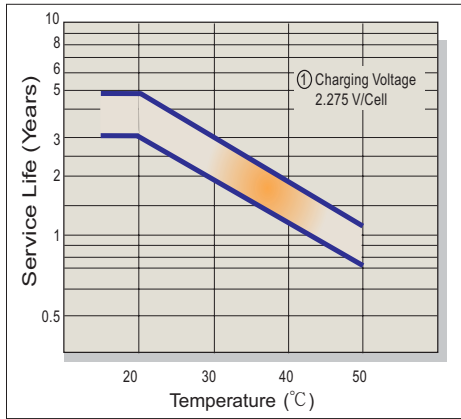
| F.V/Time | 5MIN  | 10MIN | 15MIN | 30MIN | 1HR  | 2HR  | 3HR  | 4HR  | 5HR  | 8HR  | 10HR | 20HR |
|----------|-------|-------|-------|-------|------|------|------|------|------|------|------|------|
| 1.60V    | 28.60 | 18.60 | 14.30 | 8.75  | 5.28 | 3.06 | 2.18 | 1.72 | 1.42 | 0.94 | 0.76 | 0.40 |
| 1.67V    | 26.78 | 17.90 | 13.95 | 8.69  | 5.27 | 3.05 | 2.17 | 1.71 | 1.41 | 0.93 | 0.75 | 0.39 |
| 1.70V    | 26.00 | 17.60 | 13.80 | 8.67  | 5.26 | 3.05 | 2.17 | 1.71 | 1.41 | 0.93 | 0.75 | 0.38 |
| 1.75V    | 24.25 | 16.80 | 13.30 | 8.55  | 5.24 | 3.04 | 2.16 | 1.71 | 1.41 | 0.93 | 0.74 | 0.37 |
| 1.80V    | 22.50 | 16.00 | 12.80 | 8.42  | 5.22 | 3.03 | 2.15 | 1.70 | 1.40 | 0.92 | 0.73 | 0.36 |
| 1.85V    | 20.75 | 15.20 | 12.30 | 8.30  | 5.20 | 3.02 | 2.14 | 1.70 | 1.40 | 0.92 | 0.72 | 0.35 |

### Constant Power Discharge Characteristics Unit:W (25°C,77°F)

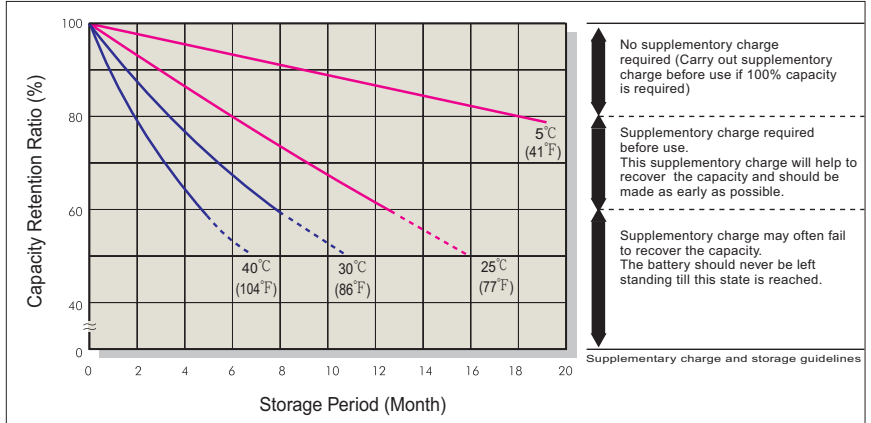
| F.V/Time | 5MIN   | 10MIN  | 15MIN | 30MIN | 1HR   | 2HR   | 3HR   | 4HR   | 5HR  | 8HR  | 10HR | 20HR |
|----------|--------|--------|-------|-------|-------|-------|-------|-------|------|------|------|------|
| 1.60V    | 172.00 | 112.00 | 85.50 | 52.50 | 31.70 | 18.40 | 13.10 | 10.30 | 8.52 | 5.62 | 4.55 | 2.37 |
| 1.67V    | 160.80 | 107.80 | 83.40 | 52.15 | 31.63 | 18.33 | 13.03 | 10.23 | 8.47 | 5.59 | 4.52 | 2.31 |
| 1.70V    | 156.00 | 106.00 | 82.50 | 52.00 | 31.60 | 18.30 | 13.00 | 10.20 | 8.45 | 5.58 | 4.50 | 2.29 |
| 1.75V    | 145.50 | 101.00 | 79.75 | 51.25 | 31.45 | 18.25 | 12.95 | 10.15 | 8.45 | 5.58 | 4.44 | 2.23 |
| 1.80V    | 135.00 | 96.00  | 77.00 | 50.50 | 31.30 | 18.20 | 12.90 | 10.10 | 8.44 | 5.57 | 4.38 | 2.16 |
| 1.85V    | 124.50 | 91.00  | 74.25 | 49.75 | 31.15 | 18.15 | 12.85 | 10.05 | 8.44 | 5.57 | 4.32 | 2.10 |

● All mentioned values are average values.

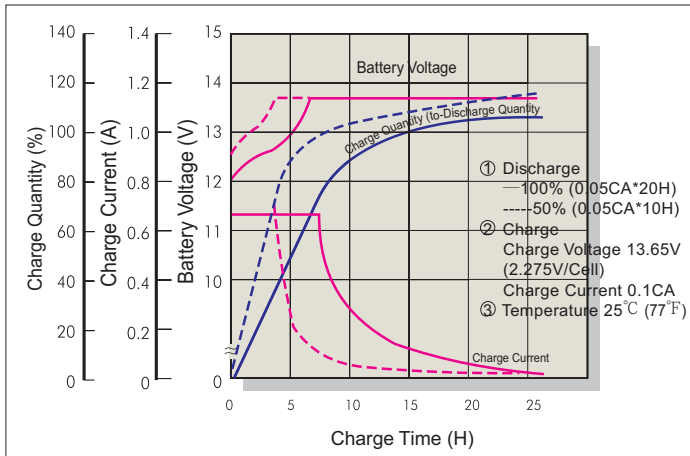
### Trickle (or Float) Service Life



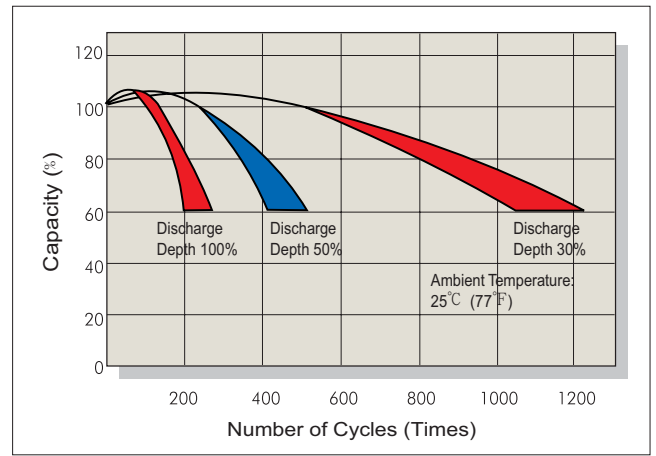
### Capacity Retention Characteristic



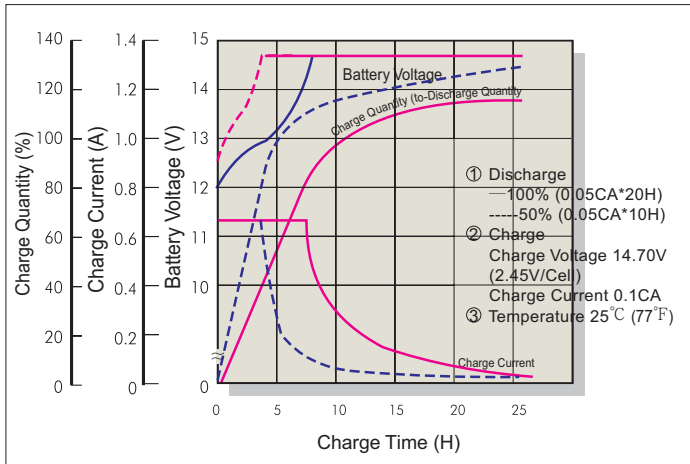
### Battery Voltage and Charge Time for Standby Use



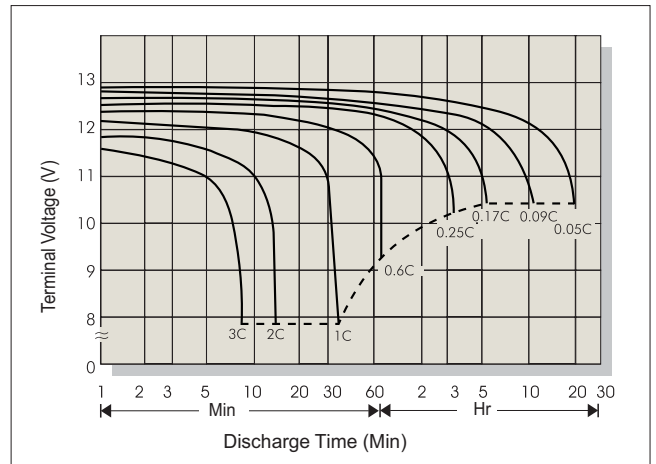
### Cycle Service Life



### Battery Voltage and Charge Time for Cycle Use



### Terminal Voltage (V) and Discharge Time (25°C 77°F)



### Charging Procedures

| Application | Charge Voltage (V/Cell) |           |                 | Max. Charge Current |
|-------------|-------------------------|-----------|-----------------|---------------------|
|             | Temperature             | Set Point | Allowable Range |                     |
| Cycle Use   | 25°C (77°F)             | 2.45      | 2.40~2.50       | 0.3C                |
| Standby     | 25°C (77°F)             | 2.275     | 2.25~2.30       |                     |

### Discharge Current VS. Discharge Voltage

| Final Discharge Voltage V/Cell | 1.75     | 1.70          | 1.55          | 1.30     |
|--------------------------------|----------|---------------|---------------|----------|
| Discharge Current (A)          | 0.2C>(A) | 0.2C<(A)<0.5C | 0.5C<(A)<1.0C | (A)>1.0C |

Sales Office [URL:WWW.CSB-BATTERY.COM](http://URL:WWW.CSB-BATTERY.COM)

#### CSB BATTERY CO., LTD.

**TAIWAN OFFICE**  
Tel: +886-2-8751-5000  
Fax: +886-2-8751-6161  
E-mail: [service@csb-battery.com.tw](mailto:service@csb-battery.com.tw)

#### CSB BATTERY OF NETHERLANDS B.V

**NETHERLANDS OFFICE**  
Tel: +31(0) 180 418 140  
Fax: +31(0) 180 418 327  
E-mail: [eurosales@csb-battery.com](mailto:eurosales@csb-battery.com)

#### CSB BATTERY (SINGAPORE) PTE., LTD.

**SINGAPORE OFFICE**  
Tel: +65-6742-4944  
Fax: +65-6742-4744  
E-mail: [sales@csb-battery.com.sg](mailto:sales@csb-battery.com.sg)

#### CSB BATTERY TECHNOLOGIES, INC.

**USA OFFICE**  
Tel: +1-817-244-7777/1-8003 CSBUSA(272872)  
Fax: +1-817-244-4445  
E-mail: [csb@csb-battery.com](mailto:csb@csb-battery.com)

#### CSB BATTERY LOGISTICS (SHANGHAI) CO., LTD.

**SHANGHAI OFFICE**  
Tel: +86-21-5046-1622, 5046-0833  
Fax: +86-21-5064-3314

#### CSB BATTERY LOGISTICS (SHANGHAI) CO., LTD.

**BEIJING OFFICE**  
Tel: +86-10-6597-8060, 6597-8070  
Fax: +86-10-6597-8050  
E-mail: [chinasls@csb-battery.com](mailto:chinasls@csb-battery.com)